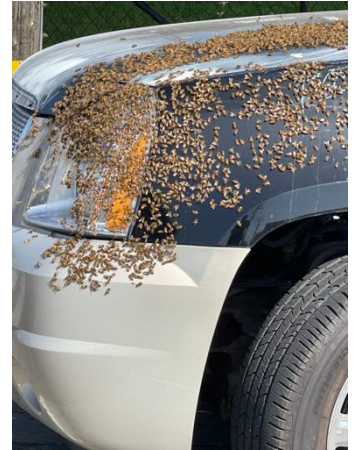


Have you spotted a swarm of honeybees?!



- 1) Don't Panic!** When clustered like this, honeybees tend to be gentle. They are just looking for a new home.
- 2) Call the ACBA!** A volunteer from the Alameda County Beekeeping Association will gladly come to adopt the bees.

Call
(510) 898-6696

Visit
alamedabees.org

Honeybee



Honeybee



Bumble Bee



Yellowjacket

